

Mk y r Calend ! 2022

February 24	Pharmacy Alumni After Hours – Lafayette Drago's, 3151 Johnston St., Lafayette, LA 6:30 – 8:30 pm
March 19	College of Pharmacy Alumni Reception in conjunction with APhA Annual Meeting; Guadalajara Grill, 301 South Alamo, San Antonio, TX 5:00 pm
April 9	St. Vincent De Paul Poor Man's Run and Jambalaya Cook-off
April 28	Pharmacy Alumni After Hours – Lake Charles 6:30 – 8:30 pm Location TBD
May 14	College of Pharmacy Senior Recognition Ceremony ULM Spring Commencement
June 4	Du Iho Society An Evening of Thanks
July 8	ULM COP Alumni Reception in conjunction with LPA Annual Meeting 8:00 pm Golden Nugget Biloxi; Biloxi, MS
August 13	P1 White Coat Ceremony College of Pharmacy Family Day
September 22	Pharmacy Alumni After Hours – Baton Rouge 6:30 – 8:30 pm Location TBD

4	Dean's Corner
5	Satellite Campus News
6	Alumni Spotlight
8	St. Vincent DePaul Poor Man's Run & Jambalaya Cook-off
12	College News
18	ULM Pharmacy Couples - Rx for Love Valentine's Special
26	Alumni News
30	Your Support Matters
32	Contact Us

DEAN'S CORNER

By: Dr. Glenn Anderson, College of Pharmacy Dean

New Orleans

Dear Pharmily,

Happy 2022! The new year's arrival brings much hope and opportunity. Hope that COVID-19's inhibition of our lives is concluding and an opportunity for our reengagement in activities that further the good works of our college.

The efforts of our students, faculty, and staff are important and have given us much for which to be thankful. The college's PharmD program completed its accreditation review in October, and although a final report has not been received, the interim report appeared very positive. The School of Clinical Sciences has launched a post-graduate training program, successfully recruited a post-doctoral fellow (July 2021 start), with two residents currently being recruited for a July 2022 start. Our research program continues its success, with 10 PhD students graduating in 2021, Dr. Seetharama Jois receiving a \$1.65 million grant from the NIH for lung cancer research, and the college receiving over \$1.2 million in total grant funding in 2021.

Yes, we have much to be thankful for, but it is a solid foundation within the





Our goal is \$10,000, or more, and there are so many ways to participate!



- 5k Run
- 1 Mile Fun Run
- Jambalaya Cook-off
- Health Fair
- Activities for the whole family





COLLEGE NEWS

Two professors at the University of Louisiana
Monroe whose innovative research could lead to
significant advancements in disease treatment and
overall health were selected to receive \$100,000
endowed professorships.



COLLEGE NEWS

Louisiana Cancer Foundation donates \$10,000 to breast cancer research of ULM's Dr. Paul Sylvester



Executive Director of the Louisiana Cancer Foundation James Adams, left, presents \$10,000 to Paul Sylvester, Ph.D., of the University of Louisiana Monroe College of Pharmacy, joined by LCF Assistant Director Donna Jackson. Siddarth Gaulee/ULM Photo Services

For 16 years, the Louisiana Cancer Foundation also supports ULM with an endowed Cancer Research, and First Tech International LCF has supported the breast cancer research scholarship for a student who is a cancer survivor. Sylvester has authored 145 peer-reviewed research articles, 22 book chapters and has presented more than 162 talks at national and international conferences. Sylvester, Ph.D., of the University of Louisiana Monroe College of Pharmacy. The LCF's most recent donation of \$10,000 in November 2021 increased the scholarship by \$5,000 to the total of \$147,500 in funding for Sylvester's research. In the Kitty DeGree School of Nursing, the LCF has donated \$30,000 to the Meresa Memorial Endowed Nursing Fund and \$22,450 for

James Adams, Executive Director of the Louisiana Cancer Institute and LCF, and Donna Jackson, Assistant Director of the LCF, presented the check to Sylvester and graduate students to present at the world's largest cancer research meeting building.

The Louisiana Cancer Foundation was formed in 1999 as a local 501C3. The mission is to promote quality-of-life for cancer patients and family members while providing Louisiana citizens with accurate and up-to-date information on prevention, and cancer treatment. This is the 16th donation of \$10,000 the Louisiana Cancer Foundation has made for Dr. Sylvester and his graduate students submitted for presentation at the annual meeting in April in New Orleans. LCF has helped over 5,300 local cancer patients with funds raised in our community, it is important that we support our local cancer research.

Sylvester, an endocrinologist, joined the College of Pharmacy in 2001. He is Associate Dean of Research and Professor of Pharmacology. His research focuses on the anti-breast cancer effects of tocotrienols, a rare natural form of vitamin E. The ULM Pharmacy students are Tasmin Sultana, Nayef Aldabaan, Ramon Villar, and Jessie Grazier.

The ASCR Annual Meeting is the epicenter of cancer research, where the latest discoveries are shared and discussed. The meeting draws 15-20,000 attendees, including healthcare professionals, researchers, scientists, patients, advocates, and survivors.

"We've had a longtime partnership with the Louisiana Cancer Foundation, and I am grateful for their continuous support. Over the years, our donations have had a tremendous impact on the research we are doing," Sylvester said. American Cancer Society, American Institute of

STORY: https://www.ulm.edu/news/2021/lcf_donation_sylvester_120321hy.html

COLLEGE NEWS

COP Welcomes Student Success Coordinator

ULM Offers PGY-1 Residency Opportunities

College of Pharmacy New Orleans and Monroe campuses have new pharmacy residency programs

ULM College of Pharmacy is pleased to announce two PGY1 Pharmacy Residency positions for the 2022-2023 residency year. One program will be housed on our main campus in Monroe, LA, and the second program will be housed on our New Orleans Regional Campus. The programs seek to provide diverse and unique practice experiences to help improve the health of our Louisiana communities. Each location will emphasize service, scholarship and teaching as core components of the program, preparing residents for a career in academic and/or clinical pharmacy.

Program leadership is under the direction of the School of Clinical Sciences and Dr. Jeff Evans. Dr. Stephen Hill will serve as the Residency Program Director for the Monroe program and Dr. Jen Hoh will serve as the Residency Program Director for the New Orleans Regional Campus. Dr. Katie Aymond, of the New Orleans Regional Campus, will serve as Coordinator for both residency programs. Clinical faculty members on all three campuses will serve as preceptors to support the mission and vision of the programs.



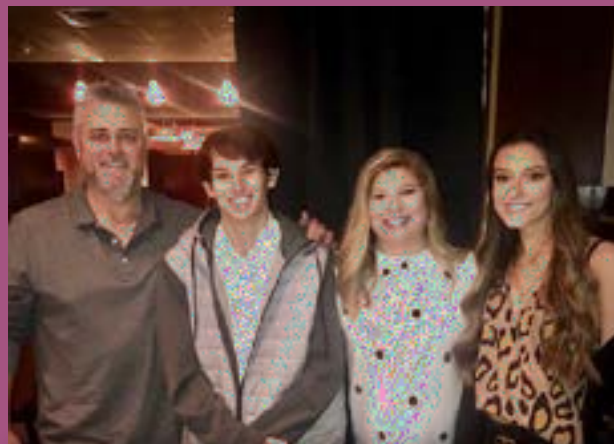
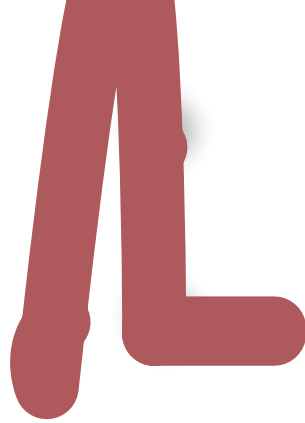
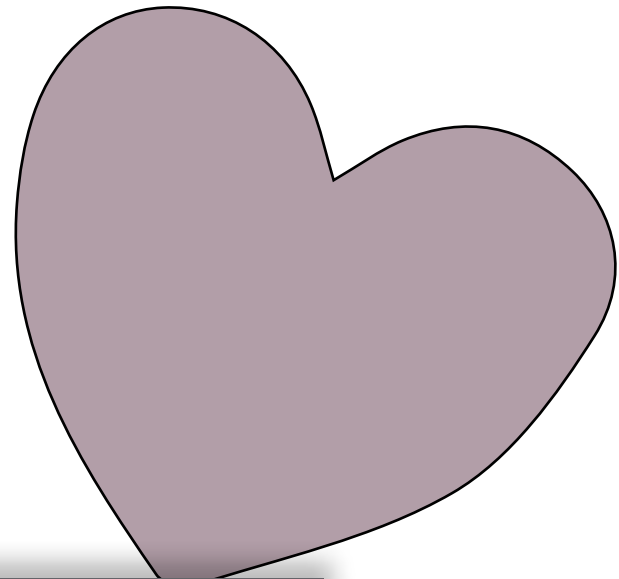
In the past fall, Liz Powell joined the OSPA as Student Success Coordinator. Mrs. Powell is here to help students to reach their full potential here at the ULM College of Pharmacy. As the Student Success Coordinator, she provides students with educational counseling, evidence-based study strategies, and career setting skills.

Mrs. Powell received her Bachelor's of Science in Family Consumer Sciences at Southeastern Louisiana University and Masters of Arts in Guidance Counseling at Louisiana Tech University. After earning her bachelors in Family Studies, she began her 16-year career in extension, bringing research-based information to the public, with the University of Arkansas and then the LSU AgCenter. Mrs. Powell transitioned to assisting college students achieve their dreams of a higher education degree as the Retention Coordinator at Louisiana Delta Community College in 2019.

If you love Volkswagens and dogs, stop by her office to chat about how she has owned 4 Volkswagens and the crazy shenanigans of her GSP, Cayenne!

Drs. Jean Christopher Chamcheu and Anthony Walker co-authored a journal article with Dr. Felicite K. Noubissi, titled "Natural Health, Disease and Management," published in Nutrients December 2021 issue. <https://www.mdpi.com/2072-6643/13/12/4383/>





Solie Badeaux Brown ('92) married to Timothy E Brown ('94). Married 26 years and have 2 children, Pierce & Paige, both students at LSU. Employed by Walmart Pharmac



Joe Andrepont R.Ph. 1983

Joe is a lifelong resident of Sulphur and is married to Sherri Trahan also of Sulphur; they have three children, Phillip, Ashley, and Leigh Ann, along with 6 grandchildren.

Joe is a graduate of Sulphur High School; he attended Louisiana State University, and is an honor graduate from the University of Louisiana-Monroe, School of Pharmacy. He is employed by Westlake Chemical Corporation where he is responsible for public and governmental affairs for the state of Louisiana, along with site wide security, drug testing, and the Medical Center for the Lake Charles plant facilities. Andrepont also works part-time as a pharmacist for Brookshire Brothers Pharmacy.

He served 5 terms on the Calcasieu Parish School Board where he served as chairman of every major committee as well as board president. Andrepont is currently serving on the Calcasieu Parish Police Jury as the District 13 Representative.

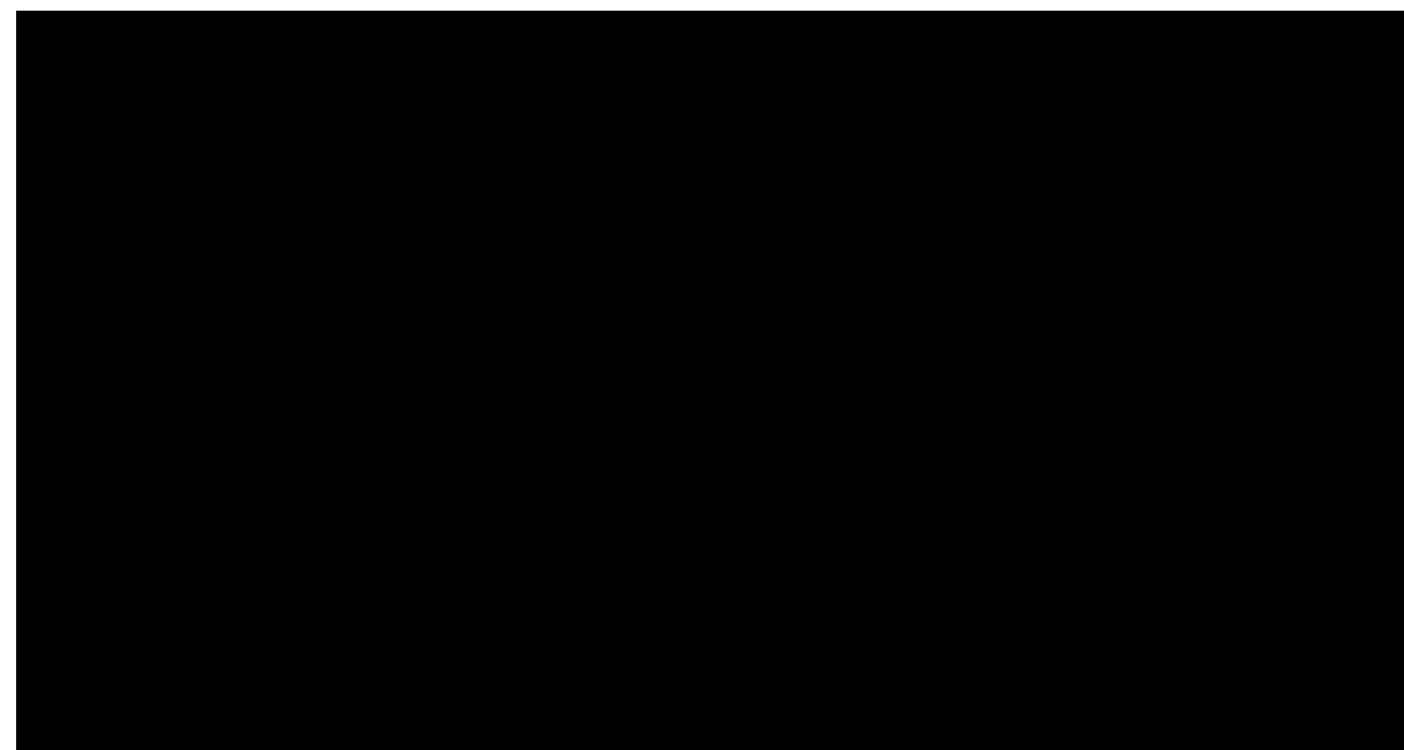
Andrepont is active in the community; he is a member of the Rotary Club of Sulphur, West Calcasieu Chamber of Commerce in which he has served as president of both organizations and is currently serving on the board of directors for the Chamber, Junior Achievement of Southwest Louisiana. Andrepont is also active in Partner's in Education, the Lake Area Industrial Alliance, and the Louisiana Chemical Association. He is the recipient of the 2018 West Cal Chamber Award of Excellence and the 2019 MVP of the Louisiana Chemical Association's Governmental Affairs Committee. In his spare time, Joe enjoys coaching his grandson's baseball team, playing golf, and raising a garden.

Art Yew Yum (NLU 1975)) of Dallas, TX, passed away on August 15, 2021

Dr. Glenn Anderson, Dean for the ULM College of Pharmacy, lost his father, Harold Anderson, on January 29, 2022.

Danny A. Collins B.S. Pharmacy 1976

Danny Collins is leaving the keys on the



Your Support Matters

To those who chose to participate in the optional “pharmacy education support fee,” the ULM College of Pharmacy students, faculty, staff and administration say “Thank You!”

Your donation of \$100 goes a long way toward helping us maintain the high standards expected of today’s pharmacists and provides opportunities these young adults would otherwise miss. Your unwavering commitment to the profession, and the examples you set, establish a standard for all to follow.

Ways to Give:

As Student Affairs Coordinator, Mrs. Michelle White is in charge

